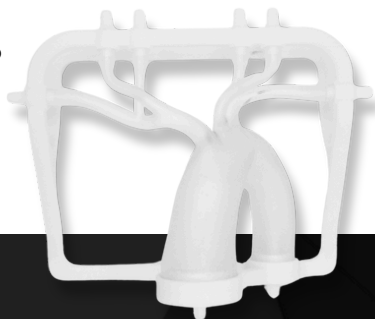




## Sim&Train: A Portable Training System for Practicing Aneurysm Treatment

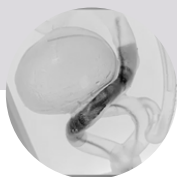
Designed to help medical professionals practice different clinical treatment options.

- Over 30 anatomic cartridges represent common pathologies such as acute ischemic stroke or cerebral aneurysm.
- Proprietary materials simulate arterial walls for best tactile feedback
- Multiple visualization options including fluoro compatibility
- Ability to preview device position before deployment



Powered by

**Sim&Cure**  
SECURE YOUR TREATMENT



## Practice Deployment

Deploy therapeutic devices  
[detachment optional]



## Universal Compatibility

Use preferred catheter and guidewire



## Simple to Setup

Low profile for maximum portability



## Adjustable Flow

Set flow speed, pulse rate, and temperature



## Sim&Ed Integration

Compare treatment options

## RELIABLE REPRODUCTION OF CLINICAL ENVIRONMENT

- 3D printed custom cartridges based on DICOM imaging
- Integrated Sim&Ed software to develop treatment strategies for optimal implant selection, sizing and positioning
- Portable, easy-to-use unit fits on your OR table or desk in angiosuite
- Circulating fluid is water-based, can be used with or without contrast
- Incorporate the aortic arch for a more comprehensive experience

B-Train



The B-Train box and tubing emulate circulating blood of a typical physiologic environment

Cartridge



Interchangeable cartridges constructed with specialized materials to approximate the tactile feel of arterial walls

IN YOUR OFFICE, CLASSROOM, OR LOUNGE - SIM&TRAIN MEETS YOU WHERE YOU ARE

Sim&Train is not medical a device and is not intended to diagnose, treat, cure, or prevent any health condition. These products have been specifically designed for training and their safety and effectiveness as medical devices have not been demonstrated.

Sim&Cure  
SECURE YOUR TREATMENT

